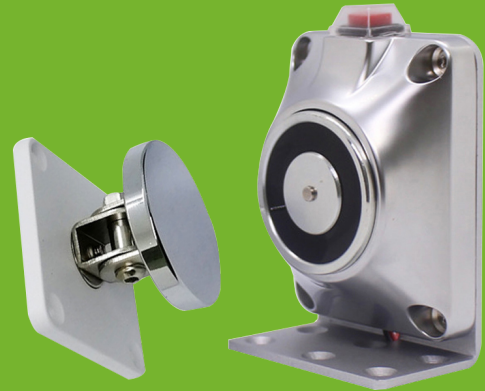


Emergency Smokeproof Electromagnetic Door holder American Type



S4A-39C

What is electromagnetic door stopper?

Electromagnetic door holders and releasers keep doors open until they are released by fire-alarm systems, remote smoke detectors, or other switching devices. They provide a high holding force. In the event of a power failure, they release the door to a closed position to keep the facility secure.

How do you remove a magnetic door stopper?

Removing the Old Magnetic Door Stop

Use a screwdriver to loosen the screws until they come off. Remove the entire catch assembly and put them aside.

Next, work on the magnetic door stop installed on the wall trim. Remove the screws, pull off the device, and set it aside.

Specifications

S4A Model No.:	S4A-39A
Material:	aluminum alloy
Surface treatment:	baking varnish
Installation form:	wall-mounted
Suction:	60kg
Working voltage:	12VDC/24VDC
Working current:	170mA/85mA
Design feature:	low power consumption design
Release button:	with test button

Dimensions

